



CARE INSTRUCTIONS

Power coated parts: Wipe with a damp cloth and dry to bring up lustre.
Chrome plated parts: Wipe with a damp cloth and dry to bring up lustre.
If the surface is sticky use a chromium or other soft metal polish. Use only a soft cloth for wiping and polishing, never sponges or steel wool. Do not use abrasive household cleaners. Do not use acidic or alkaline cleaning materials, glass cleaner or household ammonia.

TECHNICAL INFORMATION

Light source: Small and medium E14, max 1x40W incandescent or 1x30W halogen bulb. Large: E27, max 1x75W incandescent or 1x52W halogen bulb. XL: E27, max 1x150W incandescent or 1x105W halogen bulb. Turn power off when changing light bulb. The lamp is not approved for outdoor use or use in damp/wet rooms.

TROUBLESHOOTING

If lamp does not light, turn off the power. Check the bulb for a broken filament. Replace bulb if necessary, then turn it on. If the lamp still does not light, please contact customer service at the local dealer. If the external flexible cable or cord of this lamp is damaged, it must be replaced by a qualified electrician in order to avoid a hazard.



For enquiries contact GUBI A/S - CVR: 17940384
Klubiensvej 7-9. 2150 Nordhavn. Copenhagen, Denmark
T +45 69 15 60 60 – order@gubi.dk
GUBI.COM

10-20-011-03 Assembly Instructions for Bestlite BL9S, M, L & XL EU.

GUBI

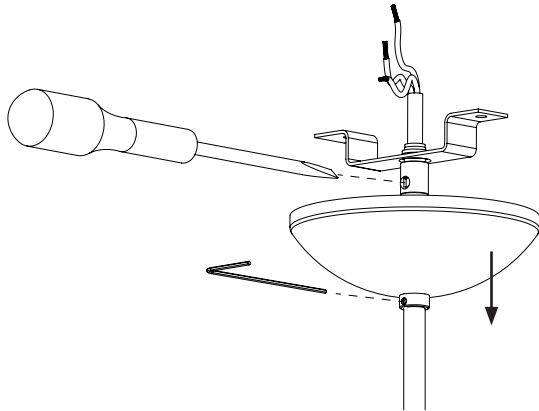
MOUNTING INSTRUCTIONS

for

BESTLITE BL9S, M, L & XL

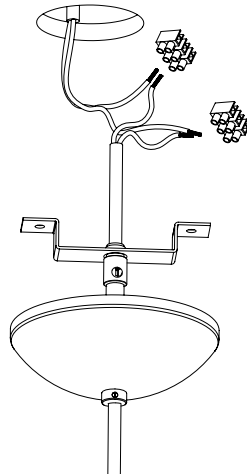
1.

Loosen screws on the stem and canopy and pull canopy down.



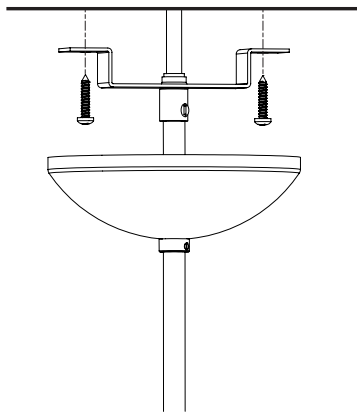
2.

Connect wires to the power supply.



3.

Attach canopy holder to ceiling with screws.



4.

Fasten strain relief, push canopy up and fasten set screw.

